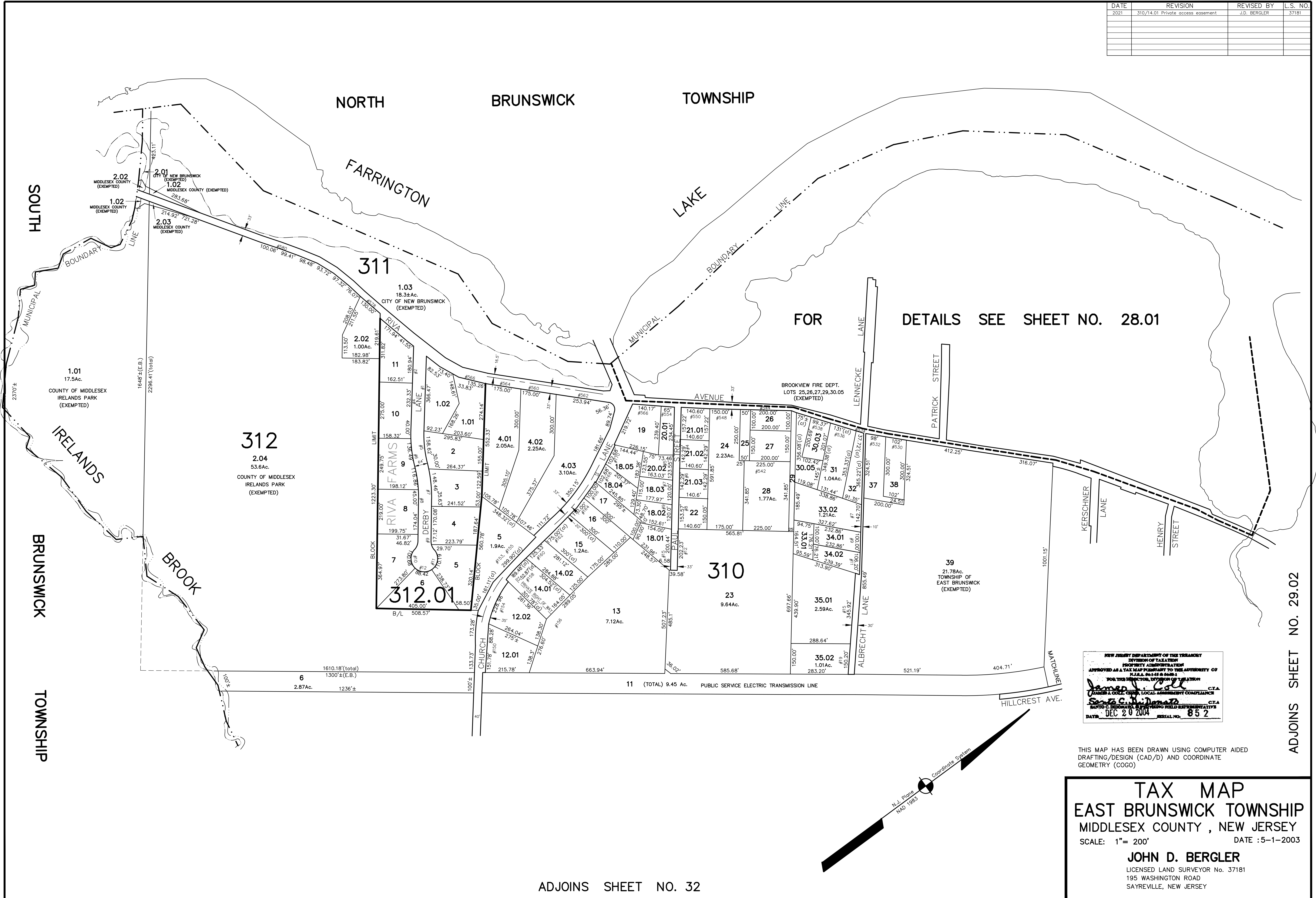


DATE	REVISION	REVISED BY	L.S. NO.
2021	310/14.01 Private access easement	J.D. BERGLER	37181



FOR DETAILS SEE SHEET NO. 28.01

NEW JERSEY DEPARTMENT OF THE TREASURY
 DIVISION OF TAXATION
 PROPERTY ADMINISTRATION
 APPROVED AS A TAX MAP PURSUANT TO THE AUTHORITY OF
 N.J.A.C. 17:27 & 17:28
 FOR THE TOWNSHIP, TOWNSHIP OF EAST BRUNSWICK
 JAMES J. COLL
 C.T.A.
 JOHN D. BERGLER
 C.T.A.
 DATE: DEC 20 2004 SERIAL NO. 852

THIS MAP HAS BEEN DRAWN USING COMPUTER AIDED DRAFTING/DESIGN (CAD/D) AND COORDINATE GEOMETRY (COGO)

TAX MAP
EAST BRUNSWICK TOWNSHIP
 MIDDLESEX COUNTY, NEW JERSEY
 SCALE: 1" = 200' DATE :5-1-2003
JOHN D. BERGLER
 LICENSED LAND SURVEYOR NO. 37181
 195 WASHINGTON ROAD
 SAYREVILLE, NEW JERSEY

ADJOINS SHEET NO. 32

ADJOINS SHEET NO. 29.02