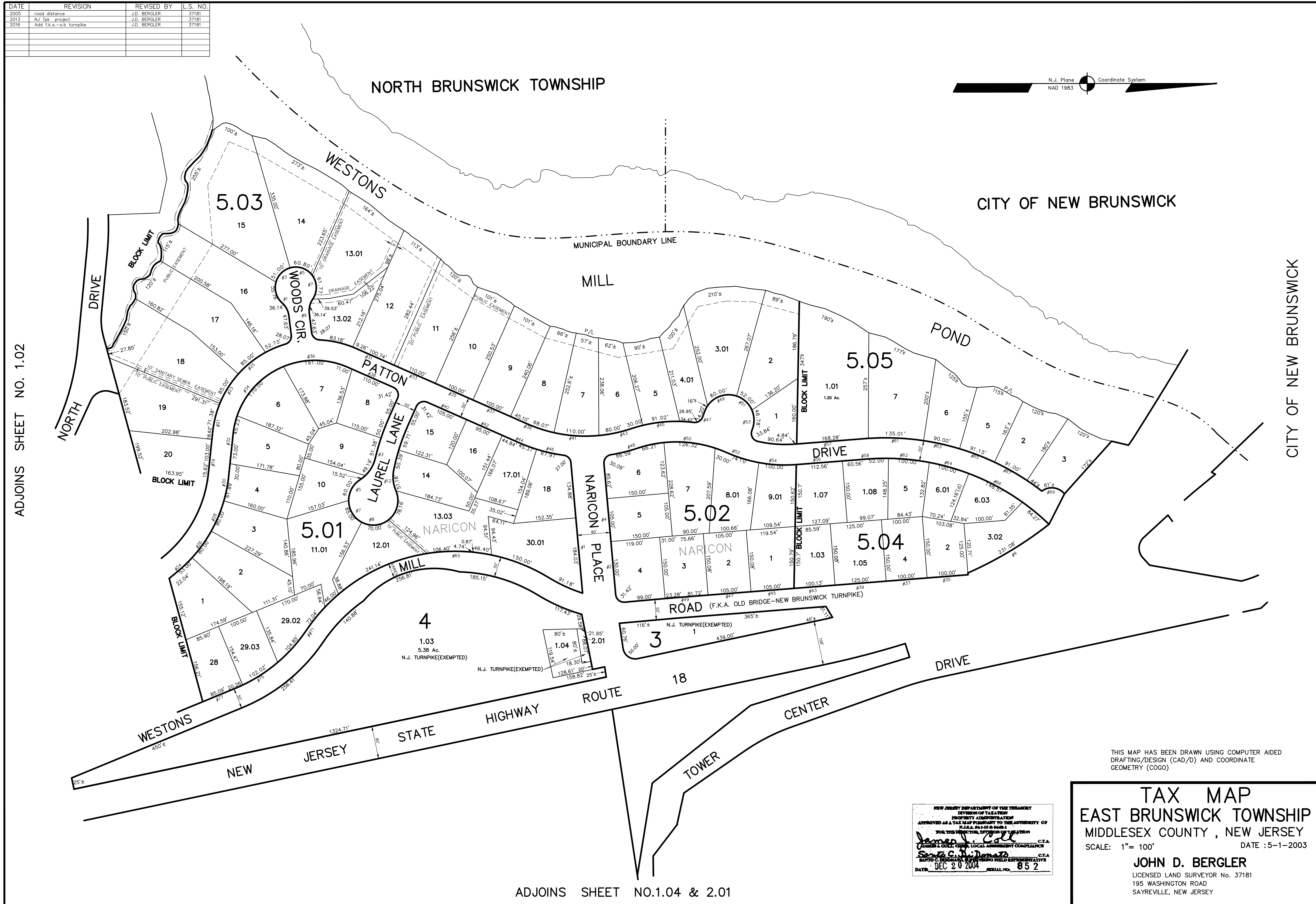
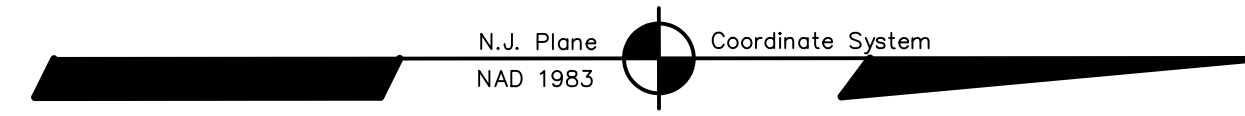


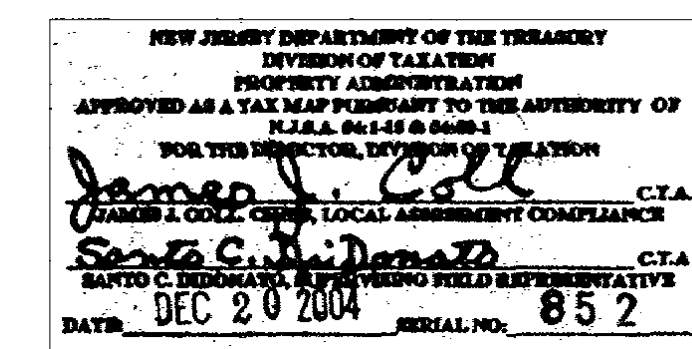
DATE	REVISION	REVISED BY	L.S. NO.
2005	road distance	J.D. BERGLER	37181
2013	NJ Tpk project	J.D. BERGLER	37181
2016	Add f.k.a.-o.b turnpike	J.D. BERGLER	37181



ADJOINS SHEET NO. 1.02

CITY OF NEW BRUNSWICK

THIS MAP HAS BEEN DRAWN USING COMPUTER AIDED DRAFTING/DESIGN (CAD/D) AND COORDINATE GEOMETRY (COGO)



TAX MAP
EAST BRUNSWICK TOWNSHIP
 MIDDLESEX COUNTY, NEW JERSEY
 SCALE: 1" = 100' DATE :5-1-2003
JOHN D. BERGLER
 LICENSED LAND SURVEYOR No. 37181
 195 WASHINGTON ROAD
 SAYREVILLE, NEW JERSEY

ADJOINS SHEET NO.1.04 & 2.01