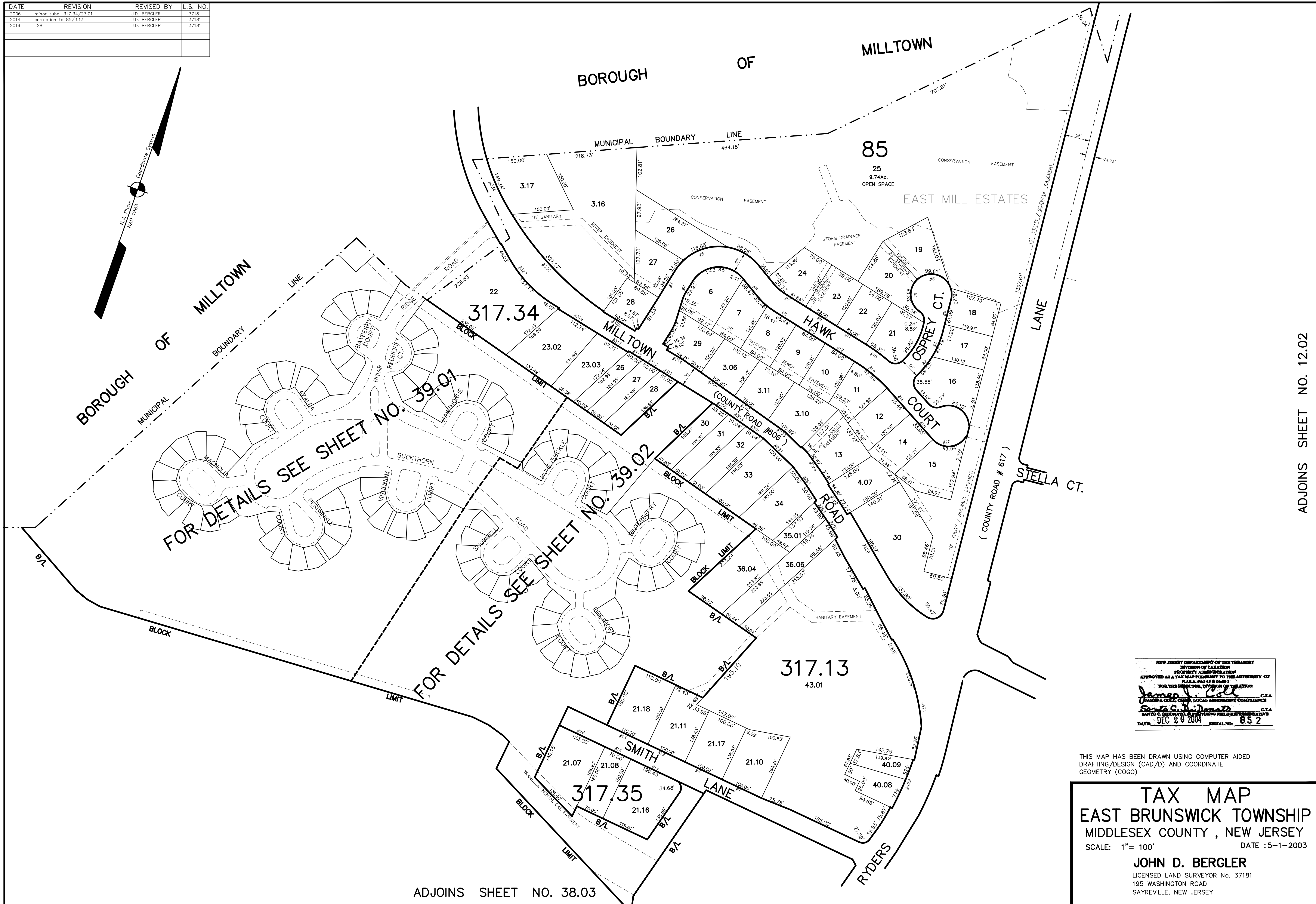
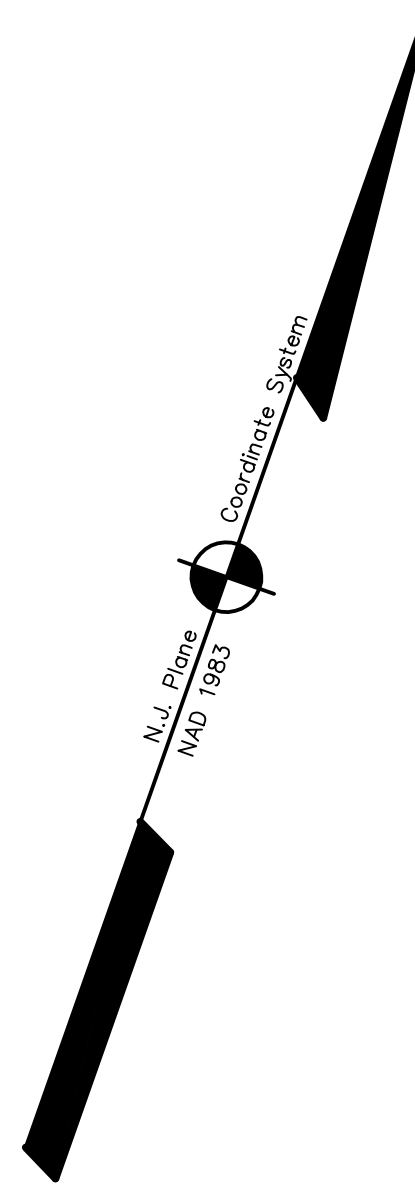


DATE	REVISION	REVISED BY	L.S. NO.
2006	minor. subd. 317.34/23.01	J.D. BERGLER	37181
2014	correction to 85/3.13	J.D. BERGLER	37181
2016	L28	J.D. BERGLER	37181



FOR DETAILS SEE SHEET NO. 39.01

FOR DETAILS SEE SHEET NO. 39.02

NEW JERSEY DEPARTMENT OF THE TREASURY
 DIVISION OF TAXATION
 PROPERTY APPRAISAL
 APPROVED AS A TAX MAP PURSUANT TO THE AUTHORITY OF
 N.J.A.C. 17:27 & 17:28
 FOR THE DIRECTOR, DIVISION OF TAXATION
John D. Bergler C.T.A.
 LOCAL GOVERNMENT COMPLIANCE
 DATE: DEC 20 2004 SERIAL NO. 852

THIS MAP HAS BEEN DRAWN USING COMPUTER AIDED DRAFTING/DESIGN (CAD/D) AND COORDINATE GEOMETRY (COGO)

TAX MAP
EAST BRUNSWICK TOWNSHIP
 MIDDLESEX COUNTY, NEW JERSEY
 SCALE: 1" = 100' DATE: 5-1-2003

JOHN D. BERGLER
 LICENSED LAND SURVEYOR No. 37181
 195 WASHINGTON ROAD
 SAYREVILLE, NEW JERSEY

ADJOINS SHEET NO. 38.03

ADJOINS SHEET NO. 12.02