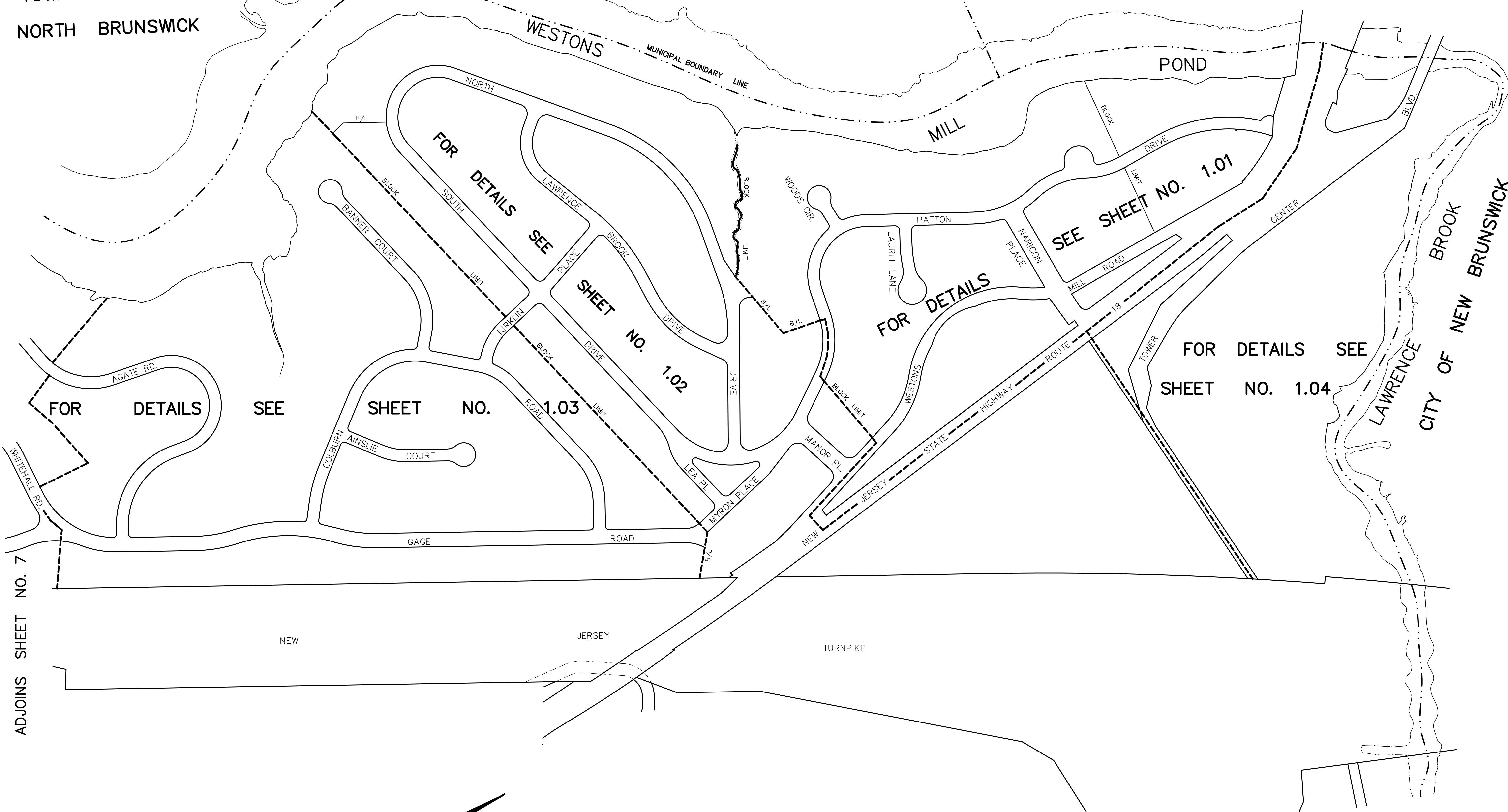


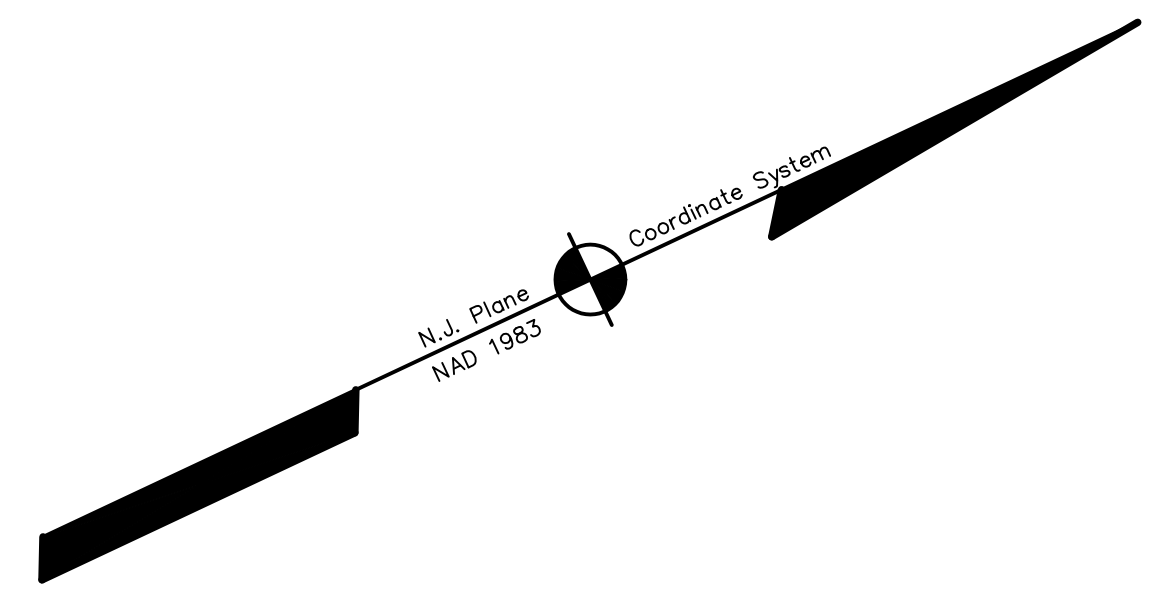
TOWNSHIP OF NORTH BRUNSWICK

CITY OF NEW BRUNSWICK



ADJOINS SHEET NO. 7

ADJOINS SHEET NO. 5



NEW JERSEY DEPARTMENT OF THE TREASURY  
 DIVISION OF TAXATION  
 PROPERTY ADMINISTRATION  
 APPROVED AS A TAX MAP PURSUANT TO THE AUTHORITY OF  
 P.L.R.A. 94-145 § 509(b)  
 FOR THE DIRECTOR, DIVISION OF TAXATION  
*Jermani, J. J.* C.T.A.  
 JAMES I. COLLIER, CHIEF, LOCAL ASSIGNMENT COMPLIANCE  
*Scott C. DeMatteo* C.T.A.  
 SCOTT C. DEMATTEO, A PROFESSIONAL FIELD REPRESENTATIVE  
 DATE: DEC 20 2004 SERIAL NO. 852

THIS MAP HAS BEEN DRAWN USING COMPUTER AIDED  
 DRAFTING/DESIGN (CAD/D) AND COORDINATE  
 GEOMETRY (COGO)

**TAX MAP**  
**EAST BRUNSWICK TOWNSHIP**  
 MIDDLESEX COUNTY, NEW JERSEY  
 SCALE: 1" = 200' DATE :5-1-2003  
**JOHN D. BERGLER**  
 LICENSED LAND SURVEYOR No. 37181  
 195 WASHINGTON ROAD  
 SAYREVILLE, NEW JERSEY