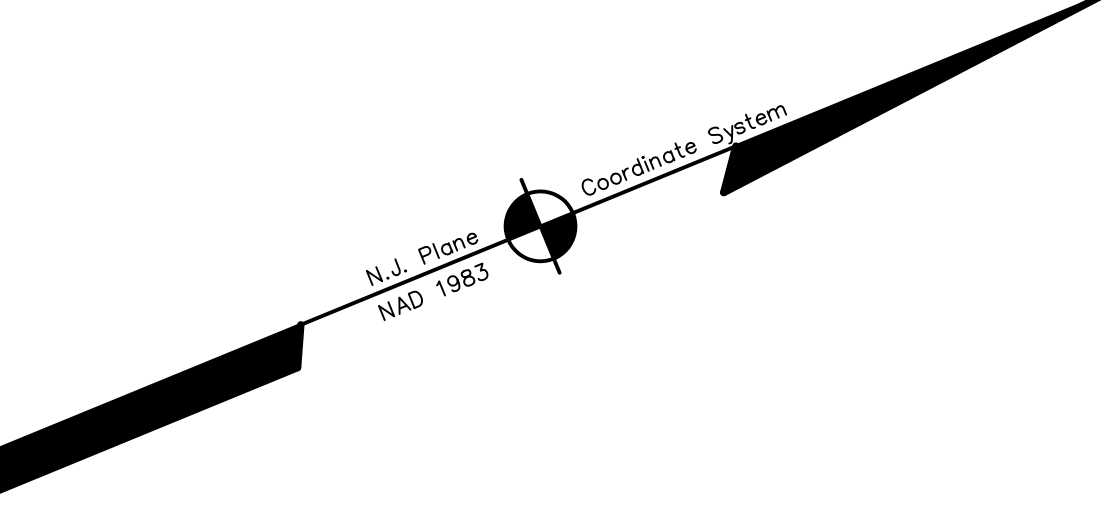
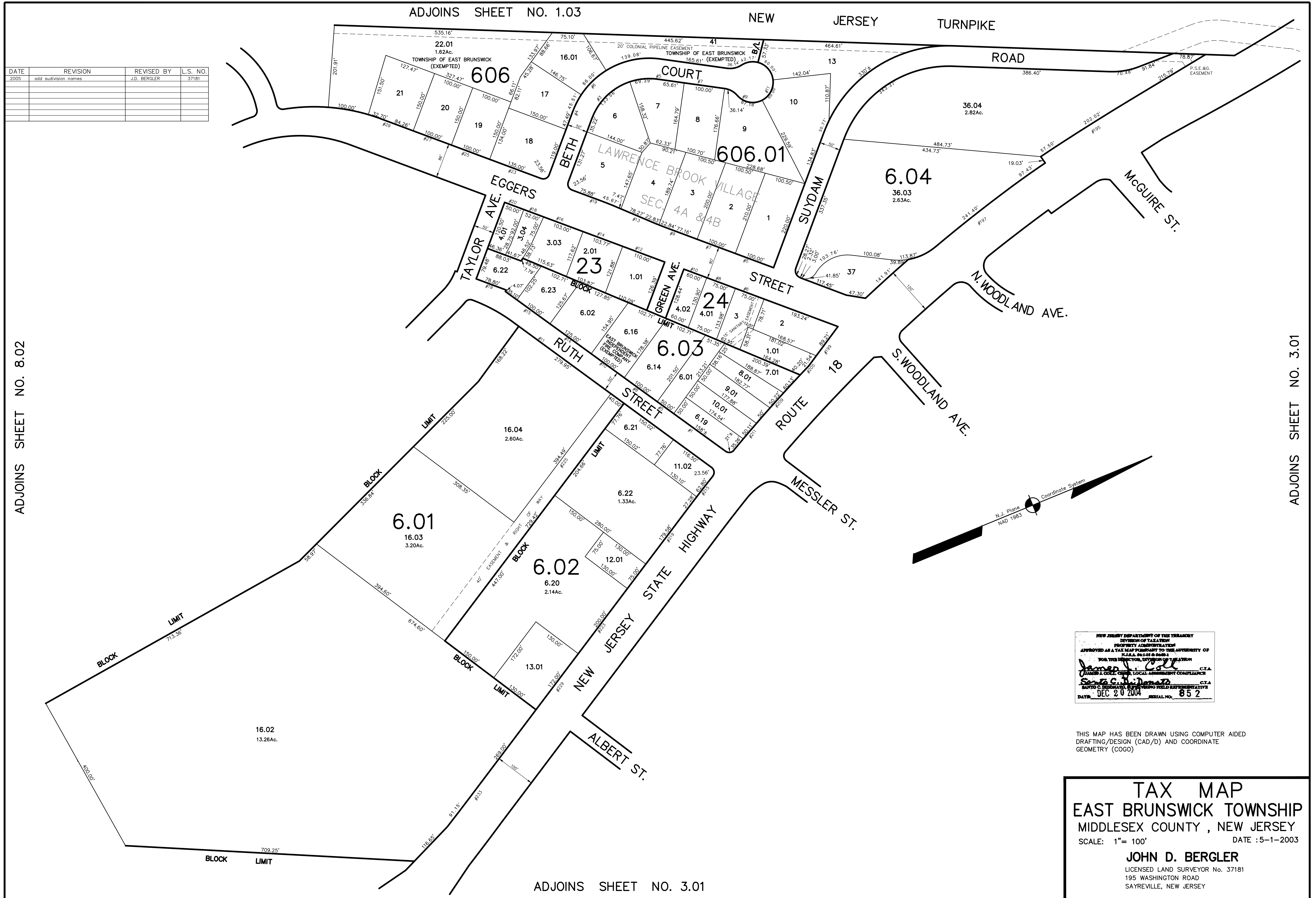


DATE	REVISION	REVISED BY	L.S. NO.
2005	add subdivision names	J.D. BERGLER	37181

ADJOINS SHEET NO. 8.02

ADJOINS SHEET NO. 3.01



NEW JERSEY DEPARTMENT OF THE TREASURY
 DIVISION OF TAXATION
 PROPERTY APPROPRIATION
 APPROVED AS A TAX MAP PURSUANT TO THE AUTHORITY OF
 N.J.A.C. 17:27-15 & 16
 FOR THE DIRECTOR, DIVISION OF TAXATION
James J. Cole C.T.A.
 JAMES J. COLE, CHIEF, LOCAL ASSESSMENT COMPLIANCE
Scott C. J. D'Amato C.T.A.
 SCOTT C. J. D'AMATO, ASSISTANT FIELD REPRESENTATIVE
 DATE: DEC 29 2004 SERIAL NO: 852

THIS MAP HAS BEEN DRAWN USING COMPUTER AIDED
 DRAFTING/DESIGN (CAD/D) AND COORDINATE
 GEOMETRY (COGO)

TAX MAP
EAST BRUNSWICK TOWNSHIP
MIDDLESEX COUNTY, NEW JERSEY
 SCALE: 1" = 100' DATE :5-1-2003
JOHN D. BERGLER
 LICENSED LAND SURVEYOR No. 37181
 195 WASHINGTON ROAD
 SAYREVILLE, NEW JERSEY

ADJOINS SHEET NO. 3.01