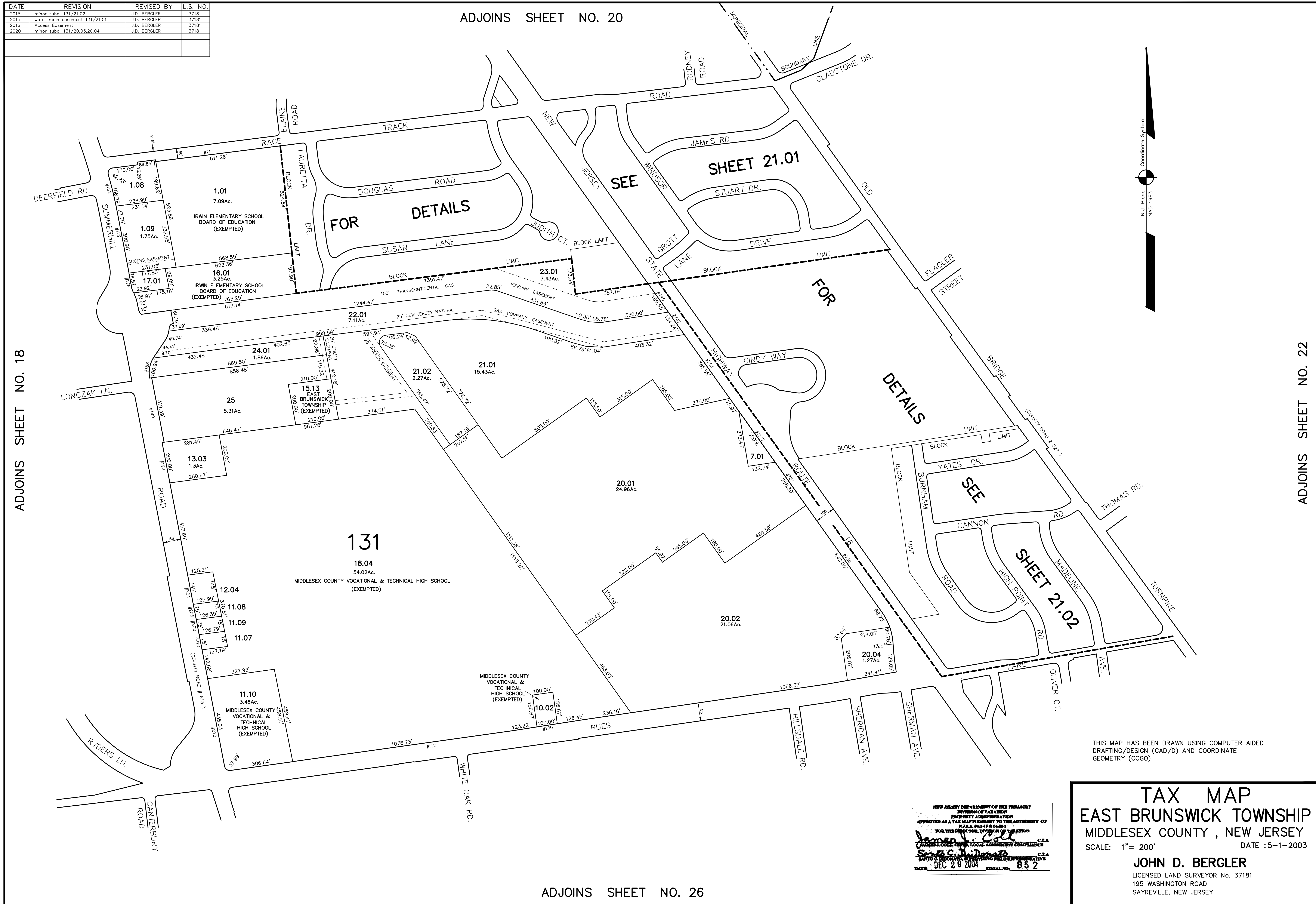


DATE	REVISION	REVISED BY	L.S. NO.
2015	minor subd. 131/21.02	J.D. BERGLER	37181
2015	water main easement 131/21.01	J.D. BERGLER	37181
2016	Access Easement	J.D. BERGLER	37181
2020	minor subd. 131/20.03,20.04	J.D. BERGLER	37181

ADJOINS SHEET NO. 20



N.J. Plans
MAY 1983
Coordinate System

THIS MAP HAS BEEN DRAWN USING COMPUTER AIDED DRAFTING/DESIGN (CAD/D) AND COORDINATE GEOMETRY (COGO)

NEW JERSEY DEPARTMENT OF THE TREASURY
DIVISION OF TAXATION
PROPERTY ADMINISTRATION
APPROVED AS A TAX MAP PURSUANT TO THE AUTHORITY OF N.J.A.C. 17:27 & 17:28
FOR THE DIRECTOR, DIVISION OF TAXATION
Santo C. DeMaddalena, C.T.A.
DATE: DEC 20 2004 SERIAL NO. 852

TAX MAP
EAST BRUNSWICK TOWNSHIP
MIDDLESEX COUNTY, NEW JERSEY
 SCALE: 1" = 200' DATE :5-1-2003
JOHN D. BERGLER
 LICENSED LAND SURVEYOR No. 37181
 195 WASHINGTON ROAD
 SAYREVILLE, NEW JERSEY

ADJOINS SHEET NO. 26