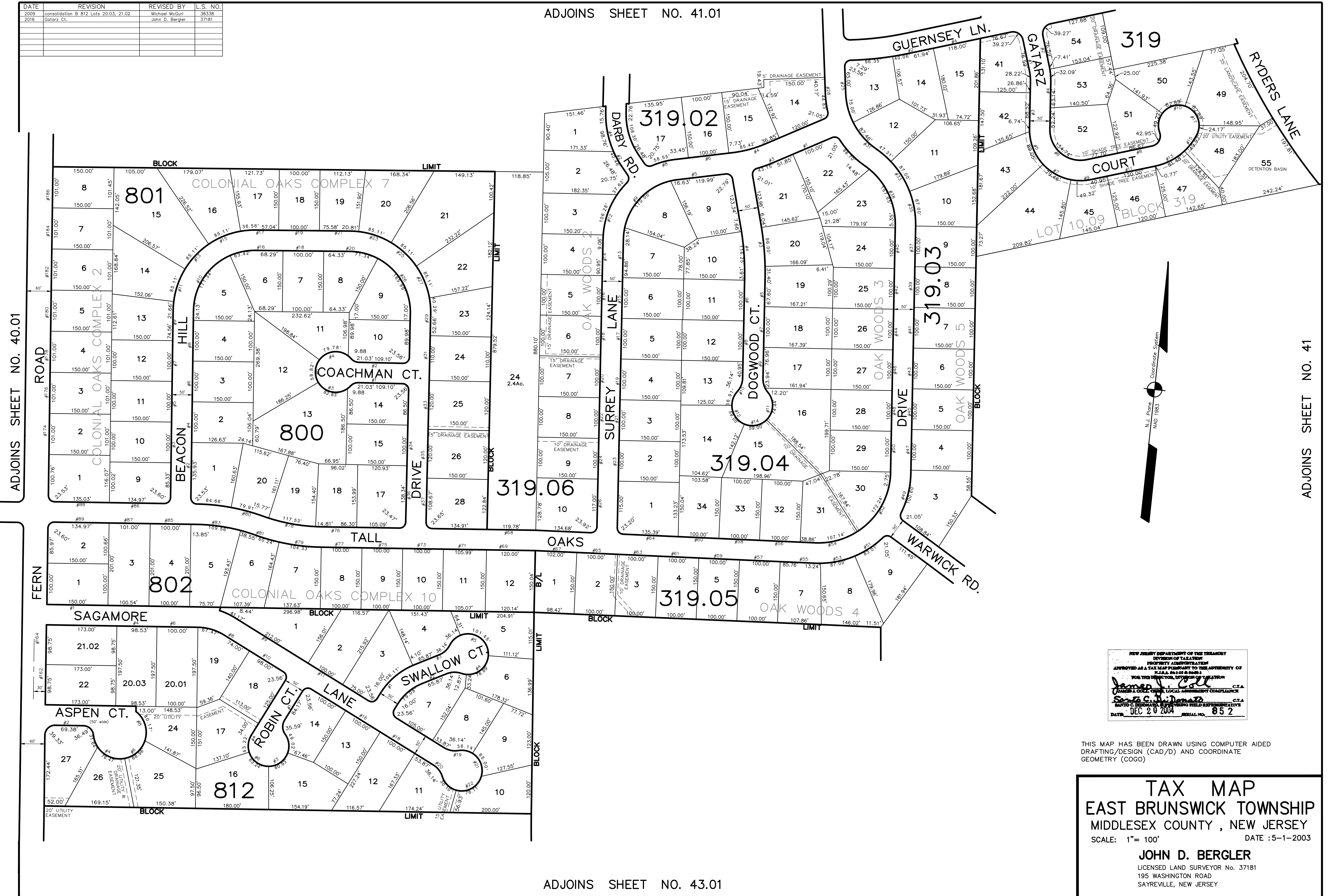


DATE	REVISION	REVISED BY	L.S. NO.
2009	consolidation B 812 Lots 20.03, 21.02	Michael McGurl	38338
2016	Gatorz Ct.	John D. Bergler	37181

ADJOINS SHEET NO. 41.01



ADJOINS SHEET NO. 40.01

ADJOINS SHEET NO. 41

NEW JERSEY DEPARTMENT OF THE TREASURY
 DIVISION OF TAXATION
 APPROVED AS A TAX MAP PURSUANT TO THE AUTHORITY OF
 N.J.A.C. 17:28 & 17:29
 FOR THE MUNICIPALITY OF EAST BRUNSWICK TOWNSHIP
James J. Call C.T.A.
James J. Call C.T.A.
 DATE: DEC 20 2004 SERIAL NO. 852

THIS MAP HAS BEEN DRAWN USING COMPUTER AIDED DRAFTING/DESIGN (CAD/D) AND COORDINATE GEOMETRY (COGO)

TAX MAP
EAST BRUNSWICK TOWNSHIP
 MIDDLESEX COUNTY, NEW JERSEY
 SCALE: 1" = 100' DATE: 5-1-2003
JOHN D. BERGLER
 LICENSED LAND SURVEYOR No. 37181
 195 WASHINGTON ROAD
 SAYREVILLE, NEW JERSEY

ADJOINS SHEET NO. 43.01