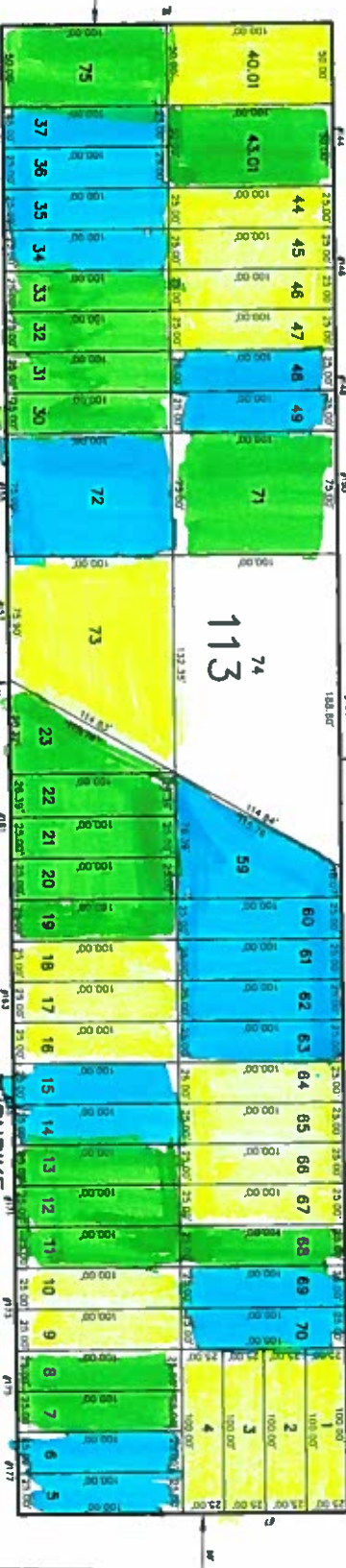
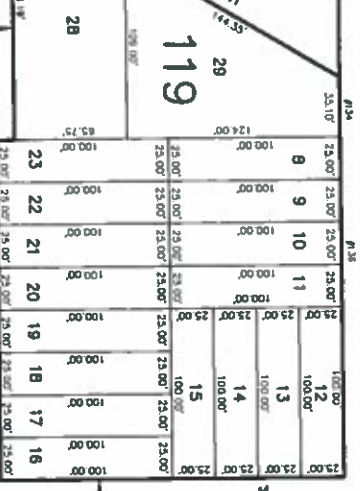
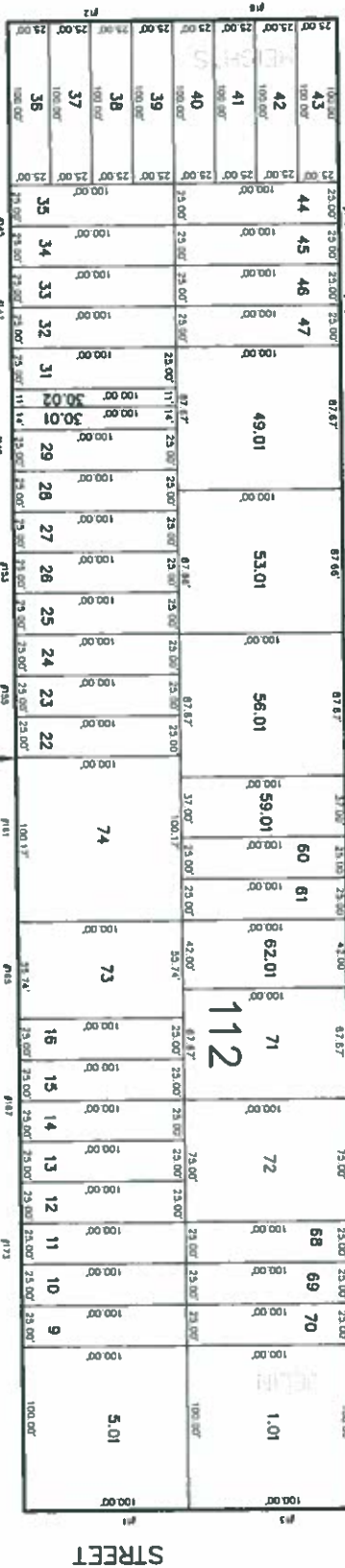
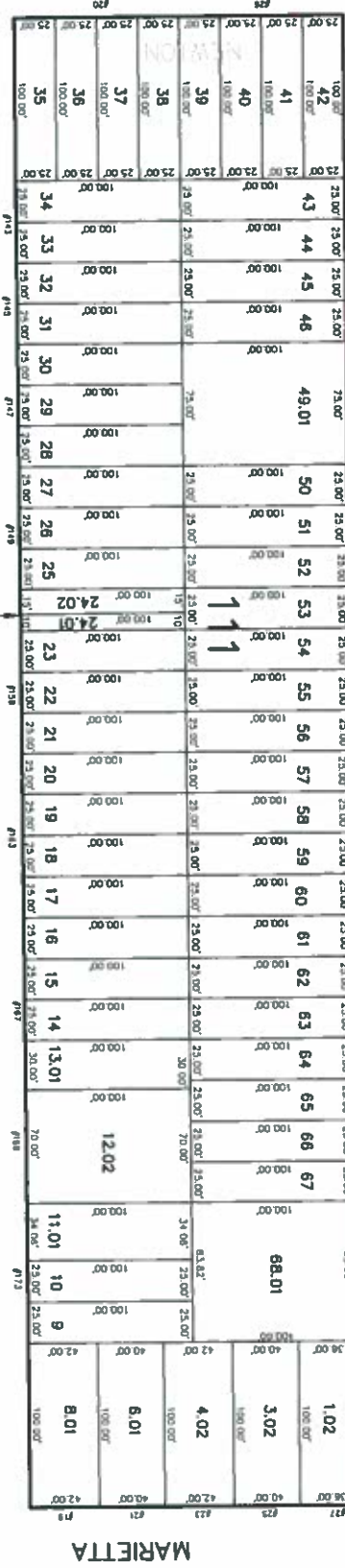
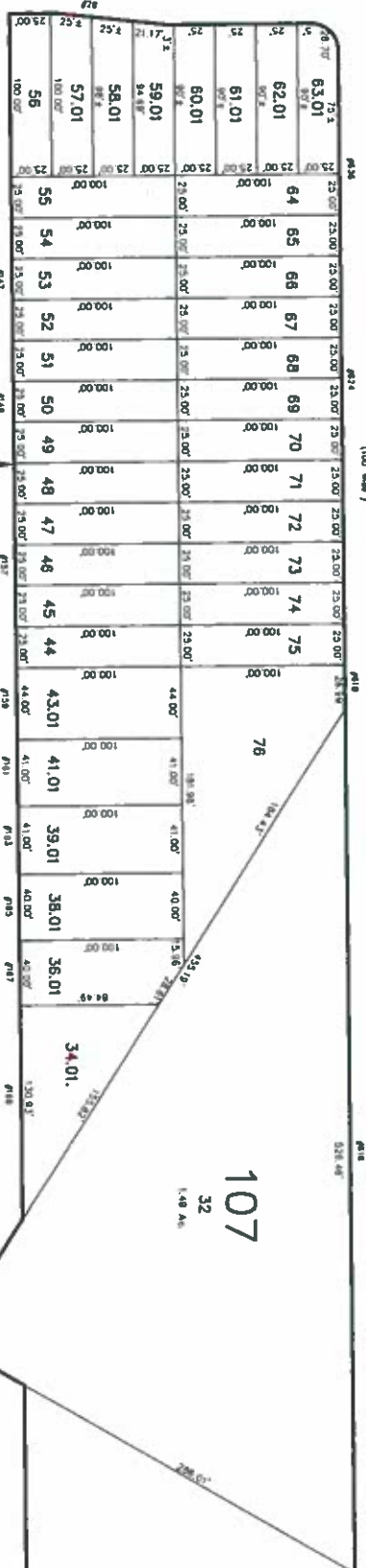
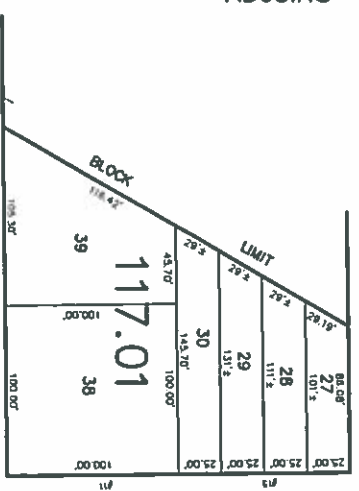
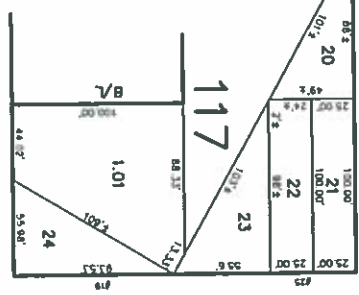
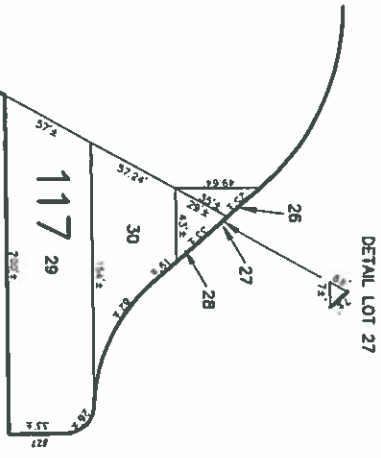


DATE	REVISION	REVISED BY	L.S. NO.
2002	101 (PRELIMINARY)	J.B. BERGLER	3118

NEW JERSEY STATE HIGHWAY ROUTE 18 ADJOINS SHEET NO. 20.05



10 lots with
10,000sf or more
4 lots with
7,500 sf
9 lots with
5,000 sf

ADJOINS SHEET NO. 20.01

ADJOINS SHEET NO. 20.03

TICE AVE. KAMM AVE. BOROUGH OF MORNINGSIDE AVE. CLEARMONT AVE. SOUTH RIVER LEXINGTON AVE.

THIS MAP HAS BEEN DRAWN USING COMPUTER AIDED DRAFTING/DESIGN (CAD/D) AND COORDINATE GEOMETRY (COGO)

TAX MAP
EAST BRUNSWICK TOWNSHIP
MIDDLESEX COUNTY, NEW JERSEY
SCALE: 1" = 50'
JOHN D. BERGLER
LICENSED LAND SURVEYOR No. 37181
195 WASHINGTON ROAD
SAREVILLE, NEW JERSEY
DATE: 5-1-2003

