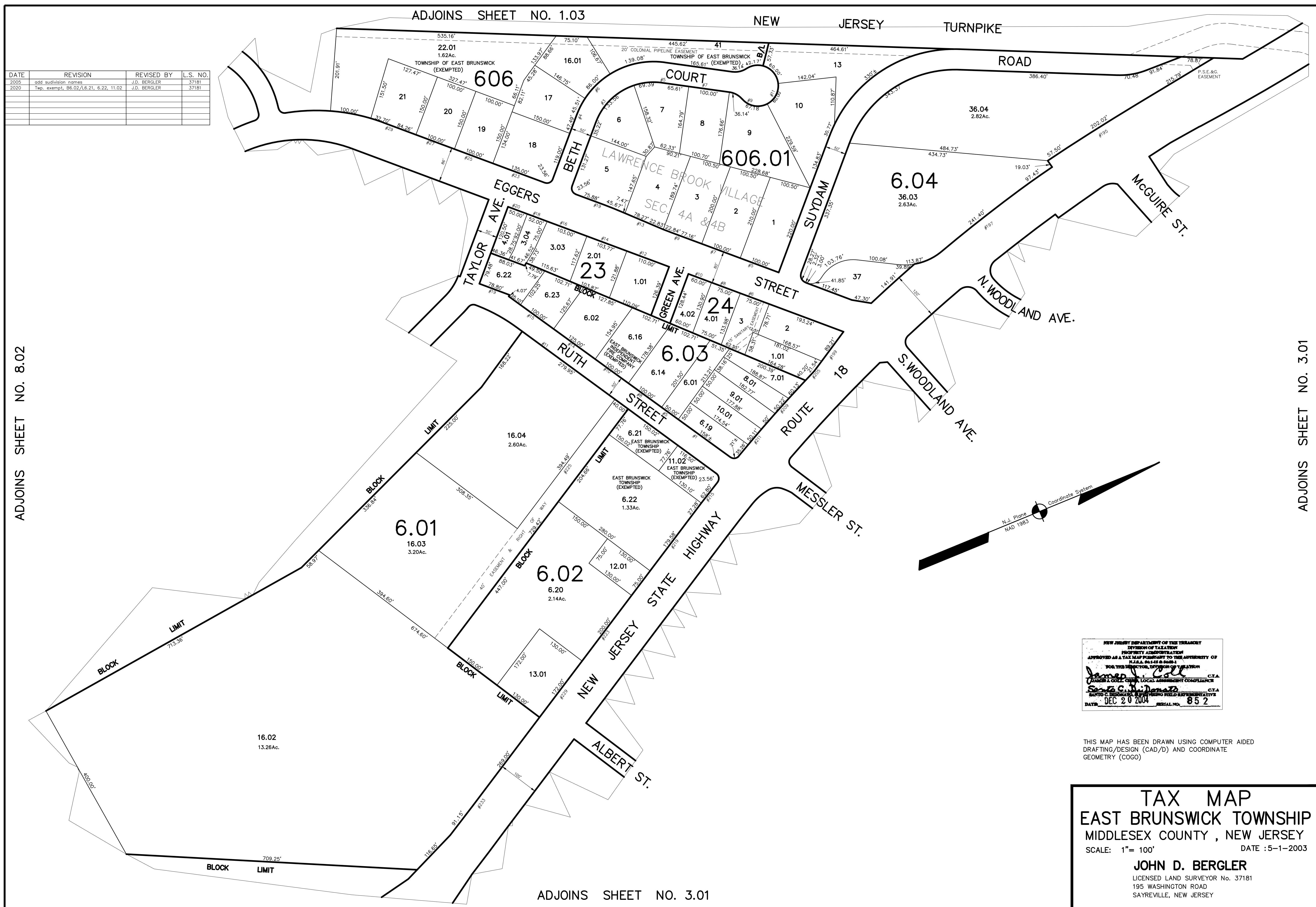
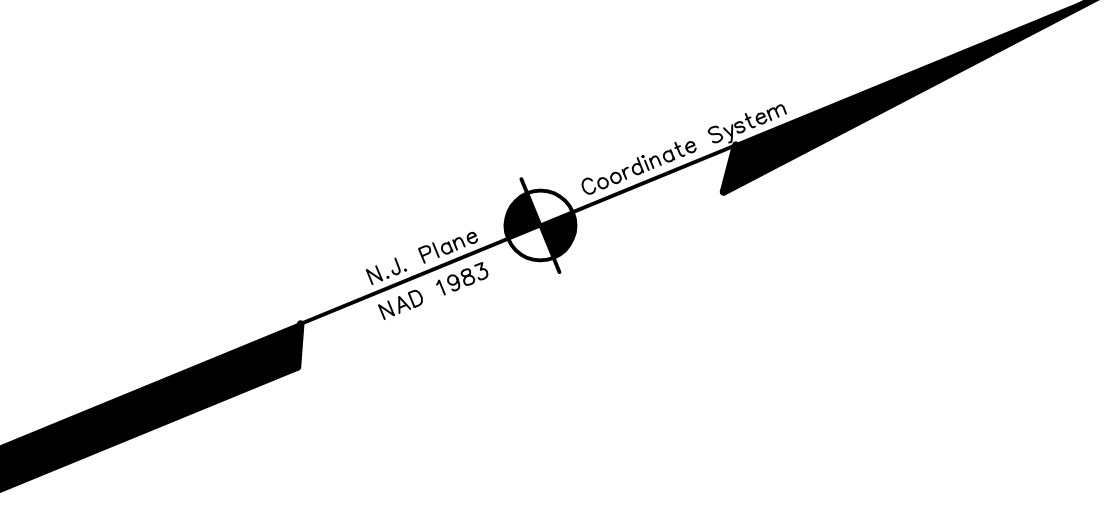


DATE	REVISION	REVISED BY	L.S. NO.
2005	add subdivision names	J.D. BERGLER	37181
2020	Twp. exempt, B6.02/16.21, 6.22, 11.02	J.D. BERGLER	37181



ADJOINS SHEET NO. 8.02

ADJOINS SHEET NO. 3.01



NEW JERSEY DEPARTMENT OF THE TREASURY
DIVISION OF TAXATION
PROPERTY ADMINISTRATION
APPROVED AS A TAX MAP PURSUANT TO THE AUTHORITY OF
N.J.A.C. 17:27 & 17:28
FOR THE DIRECTOR, DIVISION OF TAXATION
James J. Cole C.T.A.
JAMES J. COLE, CHIEF, LOCAL ASSESSMENT COMPLIANCE
Scott C. J. ... C.T.A.
SCOTT C. J. ... ASSISTING FIELD REPRESENTATIVE
DATE: DEC 20 2004 SERIAL NO. 852

THIS MAP HAS BEEN DRAWN USING COMPUTER AIDED
DRAFTING/DESIGN (CAD/D) AND COORDINATE
GEOMETRY (COGO)

TAX MAP
EAST BRUNSWICK TOWNSHIP
MIDDLESEX COUNTY, NEW JERSEY
SCALE: 1"= 100' DATE :5-1-2003
JOHN D. BERGLER
LICENSED LAND SURVEYOR No. 37181
195 WASHINGTON ROAD
SAYREVILLE, NEW JERSEY

ADJOINS SHEET NO. 3.01