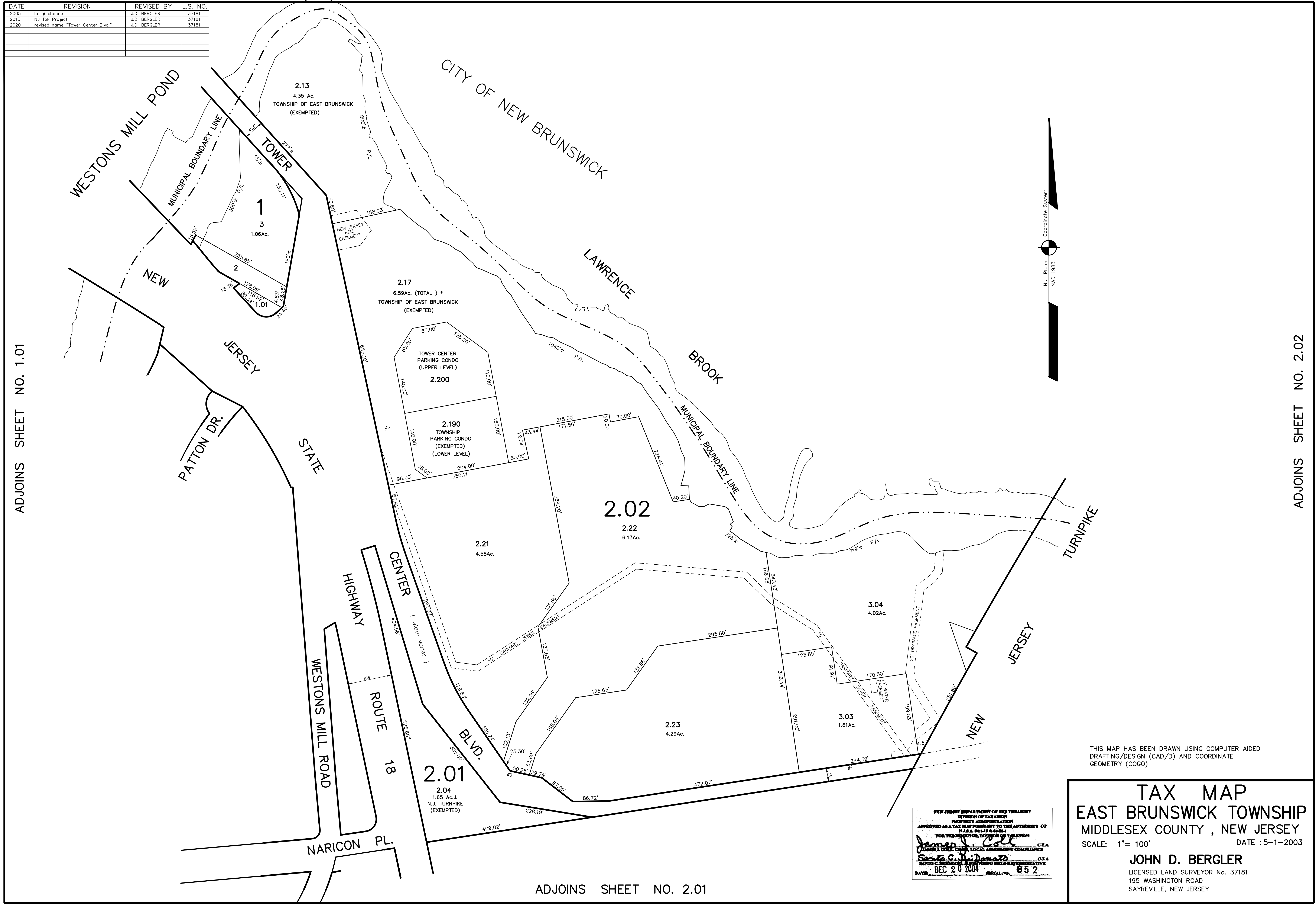


DATE	REVISION	REVISED BY	L.S. NO.
2005	lot # change	J.D. BERGLER	37181
2013	NJ Tpk Project	J.D. BERGLER	37181
2020	revised name "Tower Center Blvd."	J.D. BERGLER	37181



THIS MAP HAS BEEN DRAWN USING COMPUTER AIDED DRAFTING/DESIGN (CAD/D) AND COORDINATE GEOMETRY (COGO)

NEW JERSEY DEPARTMENT OF THE TREASURY
 DIVISION OF TAXATION
 PROPERTY ADMINISTRATION
 APPROVED AS A TAX MAP PURSUANT TO THE AUTHORITY OF
 N.J.A.C. 17:27 & 17:28
 FOR THE MUNICIPAL DIVISION OF TREASURY
James J. Call C.T.A.
 JAMES J. CALL, LOCAL ASSISTANT COMPTROLLER
Scott C. Demaree C.T.A.
 SCOTT C. DEMAREE, REPRESENTATIVE FIELD REPRESENTATIVE
 DATE: DEC 20 2004 SERIAL NO. 852

TAX MAP
EAST BRUNSWICK TOWNSHIP
 MIDDLESEX COUNTY, NEW JERSEY
 SCALE: 1" = 100' DATE :5-1-2003
JOHN D. BERGLER
 LICENSED LAND SURVEYOR No. 37181
 195 WASHINGTON ROAD
 SAYREVILLE, NEW JERSEY