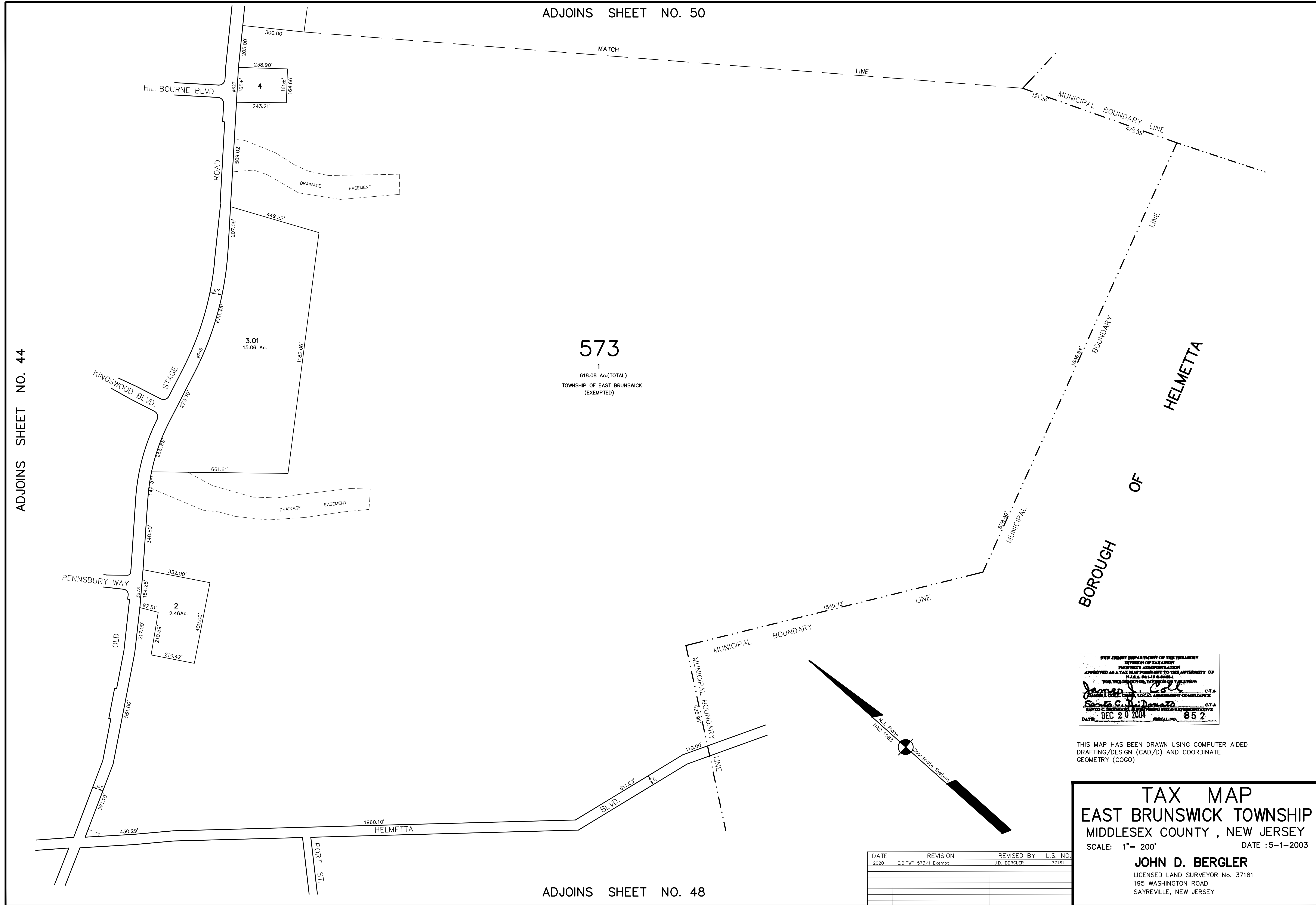


ADJOINS SHEET NO. 50

ADJOINS SHEET NO. 44

ADJOINS SHEET NO. 48



573

1  
618.08 Ac.(TOTAL)  
TOWNSHIP OF EAST BRUNSWICK  
(EXEMPTED)

NEW JERSEY DEPARTMENT OF THE TREASURY  
DIVISION OF TAXATION  
PROPERTY ADMINISTRATION  
APPROVED AS A TAX MAP PURSUANT TO THE AUTHORITY OF  
N.J.A.C. 17:27 AND 17:28  
FOR THE DIRECTOR, DIVISION OF TAXATION  
*James J. Call* C.T.A.  
JAMES J. CALL, LOCAL ASSESSMENT COMPLIANCE  
*Scott C. DeMarco* C.T.A.  
SCOTT C. DEMARCO, TAX MAP FIELD REPRESENTATIVE  
DATE: DEC 20 2004 SERIAL NO. 652

THIS MAP HAS BEEN DRAWN USING COMPUTER AIDED DRAFTING/DESIGN (CAD/D) AND COORDINATE GEOMETRY (COGO)

DATE	REVISION	REVISED BY	L.S. NO.
2020	E.B.TWP 573/1 Exempt	J.D. BERGLER	37181

**TAX MAP**  
**EAST BRUNSWICK TOWNSHIP**  
**MIDDLESEX COUNTY, NEW JERSEY**  
SCALE: 1"= 200' DATE :5-1-2003  
**JOHN D. BERGLER**  
LICENSED LAND SURVEYOR No. 37181  
195 WASHINGTON ROAD  
SAYREVILLE, NEW JERSEY