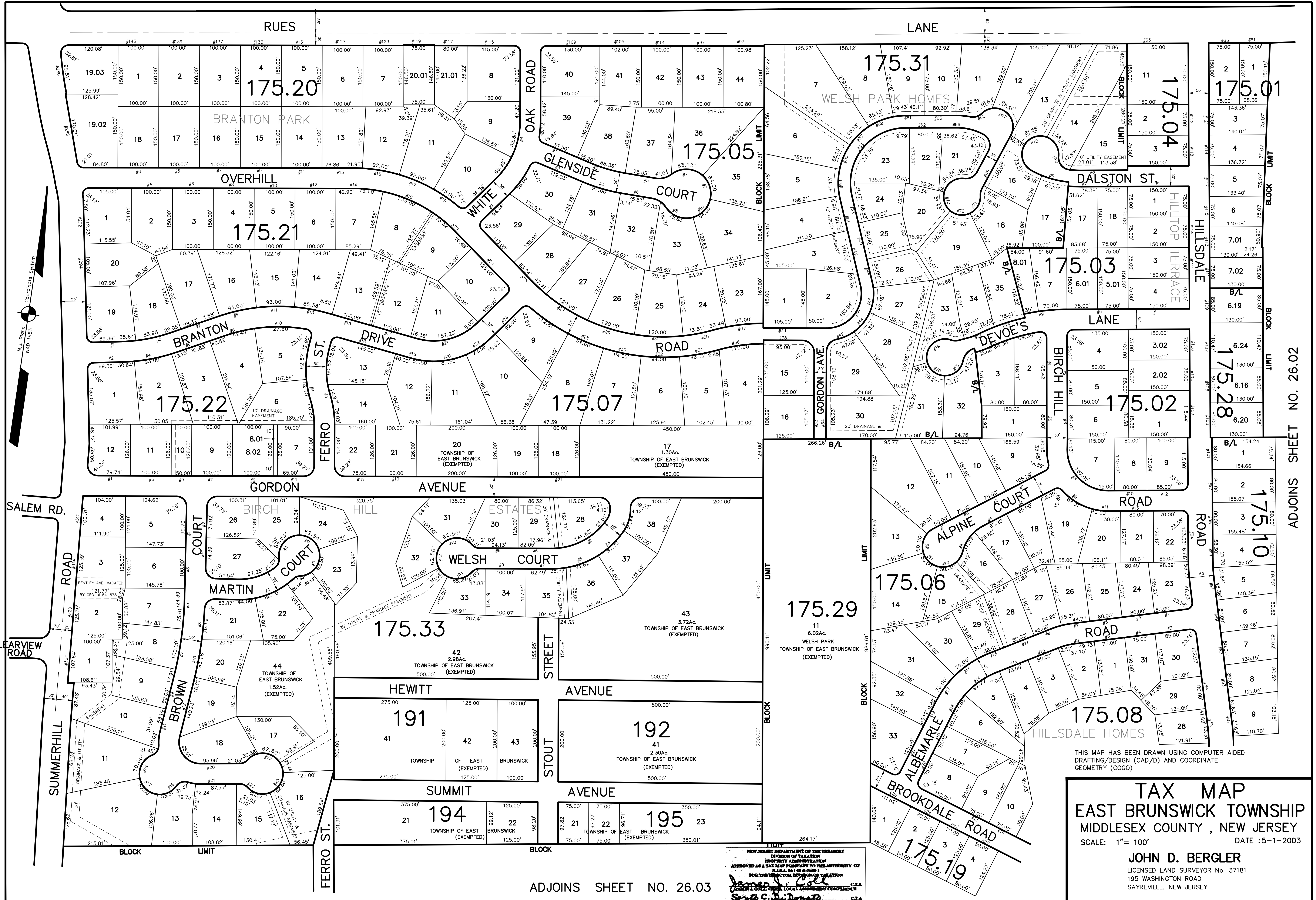


ADJOINS SHEET NO. 24.03&24.04

ADJOINS SHEET NO. 26.02

ADJOINS SHEET NO. 26.03



THIS MAP HAS BEEN DRAWN USING COMPUTER AIDED DRAFTING/DESIGN (CAD/D) AND COORDINATE GEOMETRY (COGO)

**TAX MAP**  
**EAST BRUNSWICK TOWNSHIP**  
**MIDDLESEX COUNTY, NEW JERSEY**  
 SCALE: 1" = 100' DATE: 5-1-2003

**JOHN D. BERGLER**  
 LICENSED LAND SURVEYOR No. 37181  
 195 WASHINGTON ROAD  
 SAYREVILLE, NEW JERSEY

NEW JERSEY DEPARTMENT OF TREASURY  
 DIVISION OF TAXATION  
 PROPERTY APPRAISAL  
 APPROVED AS A TAX MAP PURSUANT TO THE AUTHORITY OF  
 N.J.A.C. 17:27 & 17:28  
 FOR THE DIRECTOR, DIVISION OF TAXATION  
 JOHN D. BERGLER, C.T.A.  
 LAND SURVEYOR  
 DATE: DEC 20 2004 SERIAL NO. 852